

PAPER MILL DAM TRAIL

GENERAL DESCRIPTION:

In this city park on the Somass River there are some quiet wooded walks. There is also picnic sites and a boat launching ramp, and great river swimming.

ACCESS:

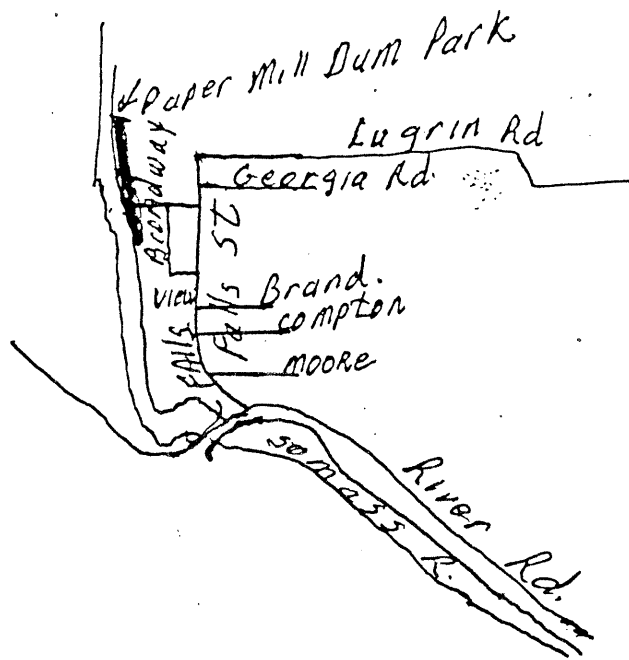
Turn right off River road just before the Somass River bridge (Orange Bridge) onto Falls Street. Drive past View Rd then turn left along Paper Mill Dam Road, a short gravel road which leads into Paper Mill Dam Park.

LENGTH AND TIME:

There are about 1 km of trails easily walked in 30 minutes.

NAME: PAPER MILL DAM  
DISTANCE/TIME:: km 1; 30 min  
DIFFICULTY:: easy  
CONDITION:: dirt trails  
ELEVATION:: 10 m change

# Paper Mill Dam.



PASSIVE REFLECTOR TRAIL

GENERAL DESCRIPTION:

Overlooking Port Alberni from a ridge on the west side of Alberni Inlet sits a Passive Reflector for telephone communication. This is a point of photographic advantage to capture the city, mills, and the inlet on film.

ACCESS:

From River Road west of Port cross the Somass River and take the first road to the left. Follow this road to Sproat Division Headquarters. Turn right onto Stirling Arm Main for 1.5 km then turn left onto Cous Creek Road for 2.5 km to Branch 421. Follow Br 421, at the first, second, and third forks keep right, at the fourth and fifth forks keep left. At the end of the trail you will find B.C. Telephones Passive Reflector at an elevation of 460 meters.

LENGTH AND TIME:

The road from Cous Main is 3 km and would take more than an hour to walk one way.

- NAME: PASSIVE REFLECTOR TRAIL
- DISTANCE/TIME:: km 3 : 1 hour
- DIFFICULTY:: road, 4 by 4, moderate
- CONDITION:: mountain road, rocky
- ELEVATION:: rise from 300m to 450m

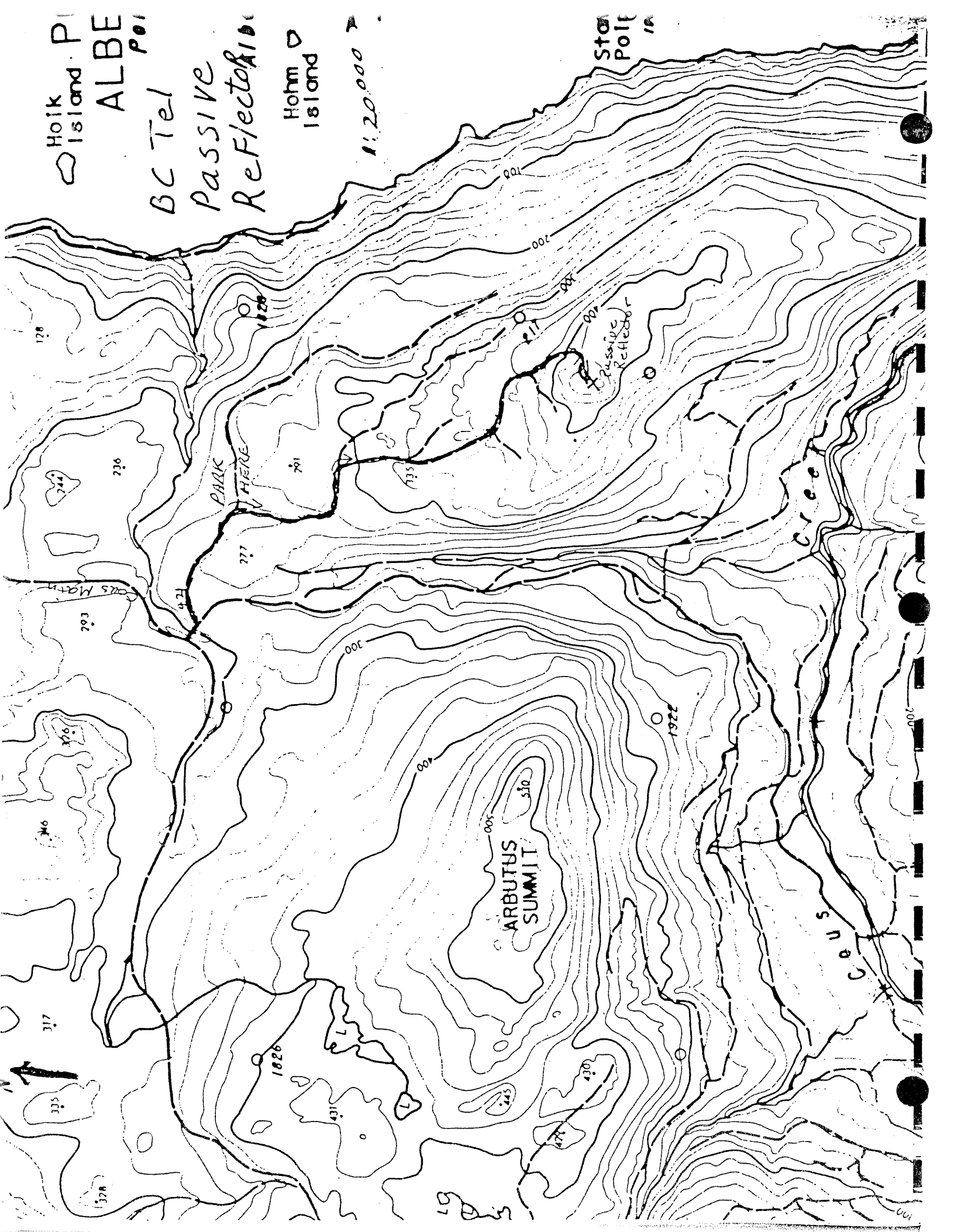
Hoik Island PI  
ALBE POI

BC Tel  
Passive  
Reflector

Hohm Island

1:20,000

Star  
Pole



PATTERSON LAKE TRAIL

GENERAL DESCRIPTION:

This small lake just east of Ash River Main is a good boating and fishing lake. This is a mountain lake so be prepared for quick weather changes. This lake was named for the Thomas Paterson family who were early settlers in Alberni. The trail also connects to Somers lake to the north.

ACCESS:

Drive west out of Port Alberni on Highway #4 for 13 km. then turn right onto Great Central Lake Road (1 km east of Sproat Lake Park). Follow G.C.L. Road for 8 km and then turn right and go over the logging bridge and follow the Ash River Main, a broad gravel logging road, for 4 km uphill. Turn right onto the short logging road, the second branch to the right off the Ash Main, and the lake is on the right.

LENGTH AND TIME:

The trail is about 1 km one way and can be walked in under an hour.

NAME: PATTERSON LAKE TRAIL  
DISTANCE/TIME:: km 1: 1 hr  
DIFFICULTY:: easy  
CONDITION:: woods, rock,  
ELEVATION:: 10 m change

Patterson + Somner Lake.

8.9!

← To Ash

River main  
1.386 metres from Lake

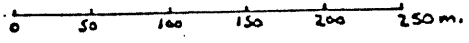
Creek

Creek

Somner  
Lake



Scale 1:5000  
1 cm = 50 metres



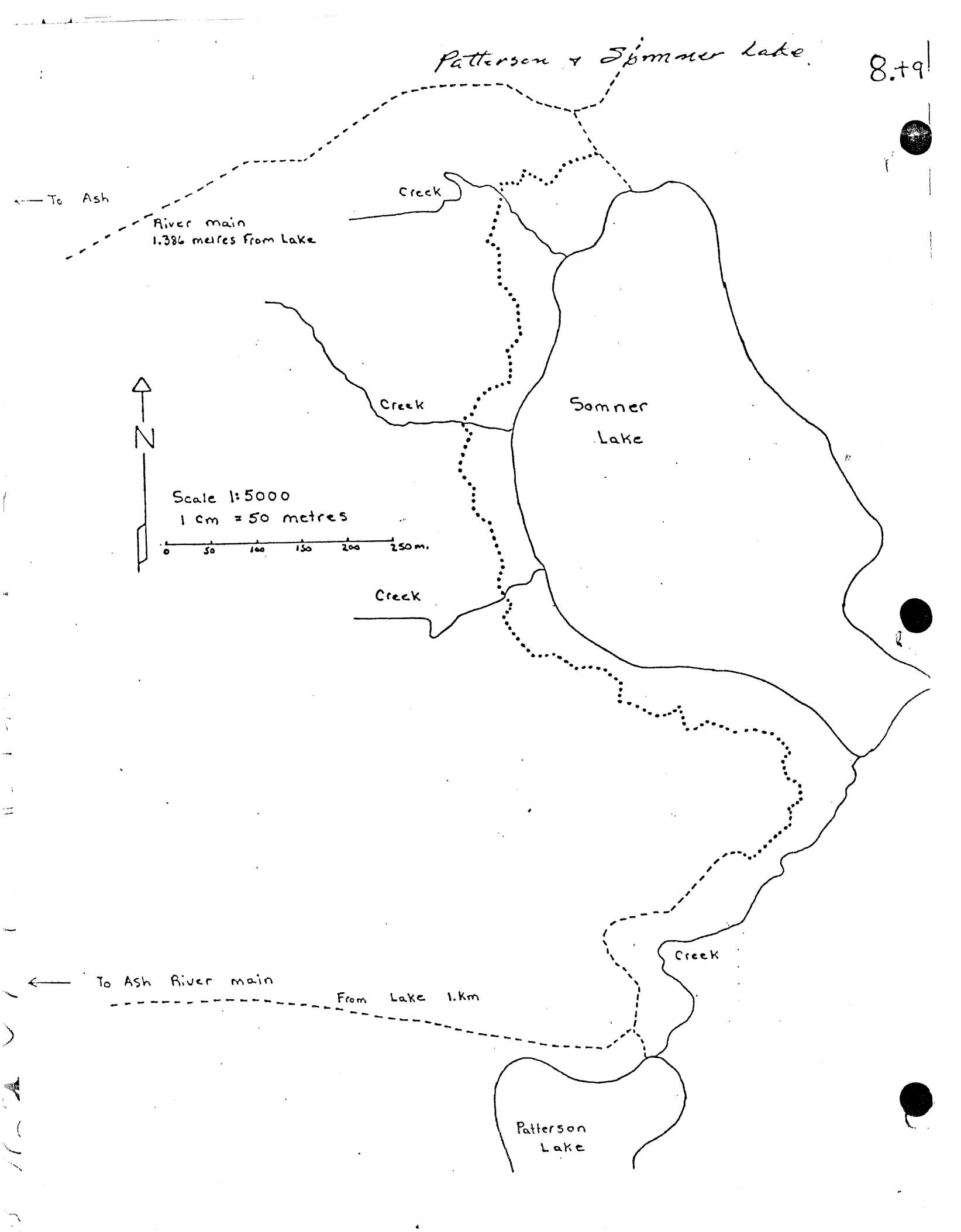
Creek

Creek

← To Ash River main

From Lake 1.km

Patterson  
Lake



RIFLE RANGE (OLD) TRAIL

GENERAL DESCRIPTION:

This wooded trail leads from Highway #4 through the old military rifle range to the banks of Rogers Creek across from the Grad.

ACCESS:

Access is only from Highway #4. five hundred meters east of the I.C.G. station.

LENGTH AND TIME:

The length into the rifle range is 1 km and can be walked in an hour.

NAME: RIFLE RANGE (OLD) TRAIL  
DISTANCE/TIME:: km 1 ; 1 hr.  
DIFFICULTY:: easy  
CONDITION:: muddy , logging road  
ELEVATION:: 20 m change

Rifle Range Area  
1:20000

0 1 KM

Hwy 4

RIFLE RANGE

Rogers Cr

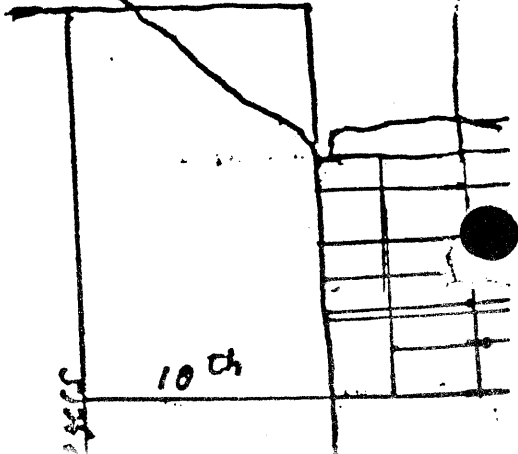
Old Nanaimo

JOHNSTON

Redford.

Extinct RR

BURDE RD



RIVER ROAD DIKE TRAIL

GENERAL DESCRIPTION:

This flat narrow gravel trail follows River Road along the Somass River from Victoria Quay to the Somass River (Orange) Bridge. This is could be a bicycle route out to Paper Mill Dam park , or and evening stroll.

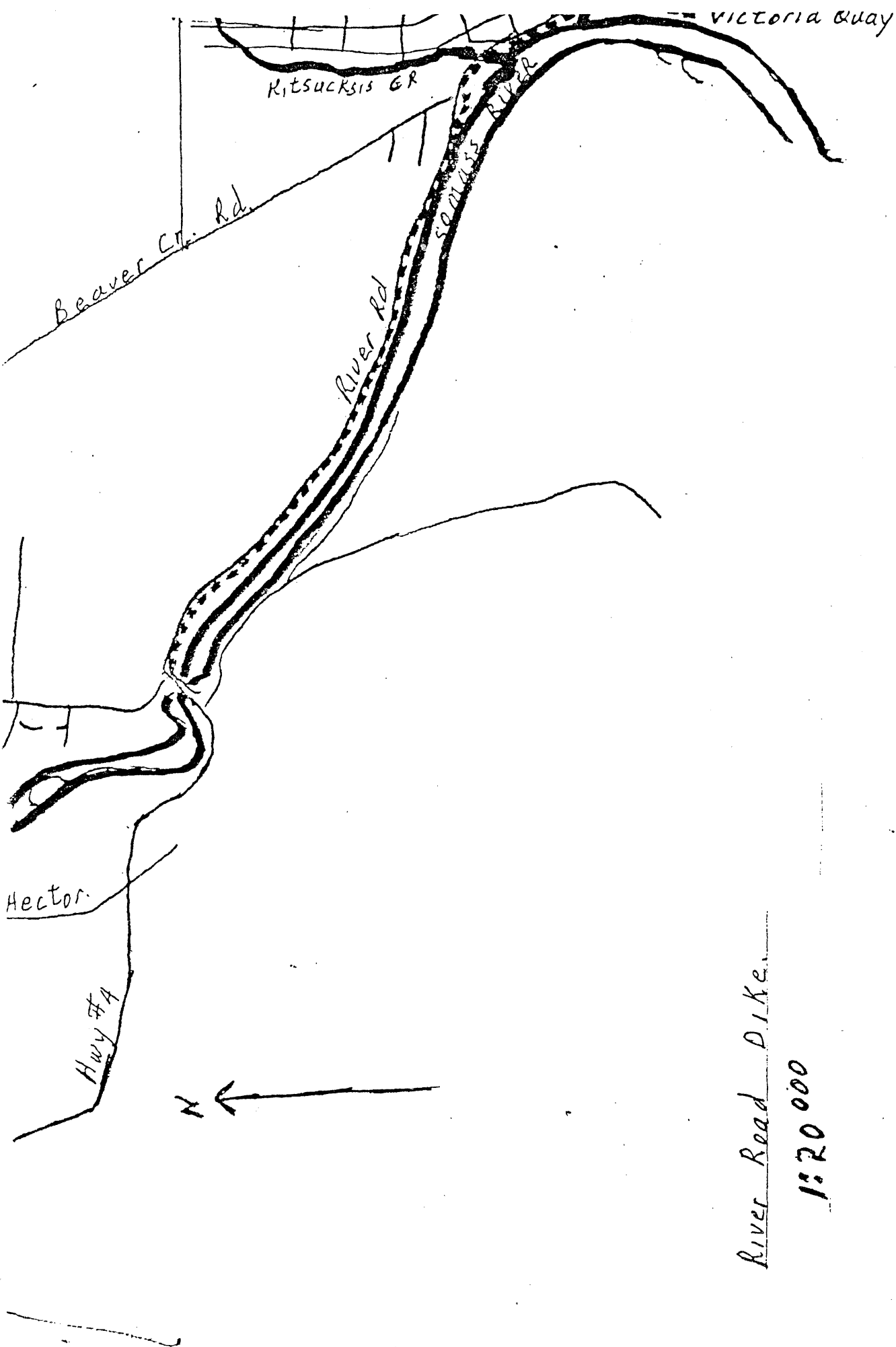
ACCESS:

From Highway #4 and Johnston Road.

LENGTH AND TIME:

length is 3 km. which is one hour one way

- NAME: RIVER ROAD DYKE
- DISTANCE/TIME:: km 3: 1 HR.
- DIFFICULTY:: easy
- CONDITION:: gravel, paved road
- ELEVATION:: no change



River Road Dike.

1:20 000

### ROGERS CREEK NATURE TRAIL

#### GENERAL DESCRIPTION:

This trail provides an interesting and stimulating afternoon for a family outing. It is easily located close to the city limits.

No special equipment is needed to hike this trail, only an enthusiasm for a walk through a nicely shaded cool forest path.

You will also find that there are many points of interest noted on the map and described below with corresponding numbers.

#### ACCESS:

The start of the trail can be found by following Redford street east until it becomes the highway. From the Hospitality Inn following the highway for 2 km and on the right hand side you will see a small parking area and a sign that reads Roger Creek Nature Trail.

#### LENGTH AND TIME:

The trail is 4.8 km one way and the estimated time to walk in and out would be about 3 hours.

#### TRAIL DESCRIPTION:

1. In the first 800 meters you will cross two wooden bridges over small run off creeks.
2. At this point the trail passes through a clearing from which the old Railway Trestle can be seen.
3. This is the half way point in the trail. Here the river takes a slight bend and forms a good hole for swimming or fishing.
4. This is a good place to stop for lunch with a view on the opposite bank of large slate cliffs.
5. A bad spot were a deep gully with a small creek running through must be crossed.
6. At this point the trail has climbed high above Roger Creek and offers a good view of a slate canyon.
7. The main trail end here.

N.B. For those who wish to continue, there is a small path down a very steep hill.

USE CAUTION UNSTABLE GROUND

At the end of this trail there is a beautiful water fall which make the extra hike very worthwhile.

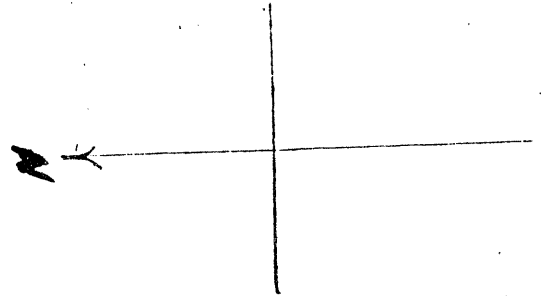
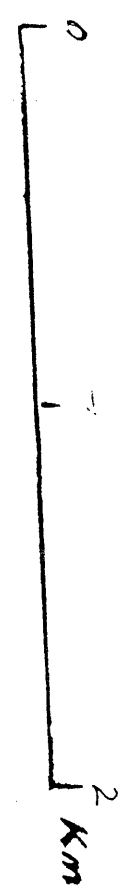
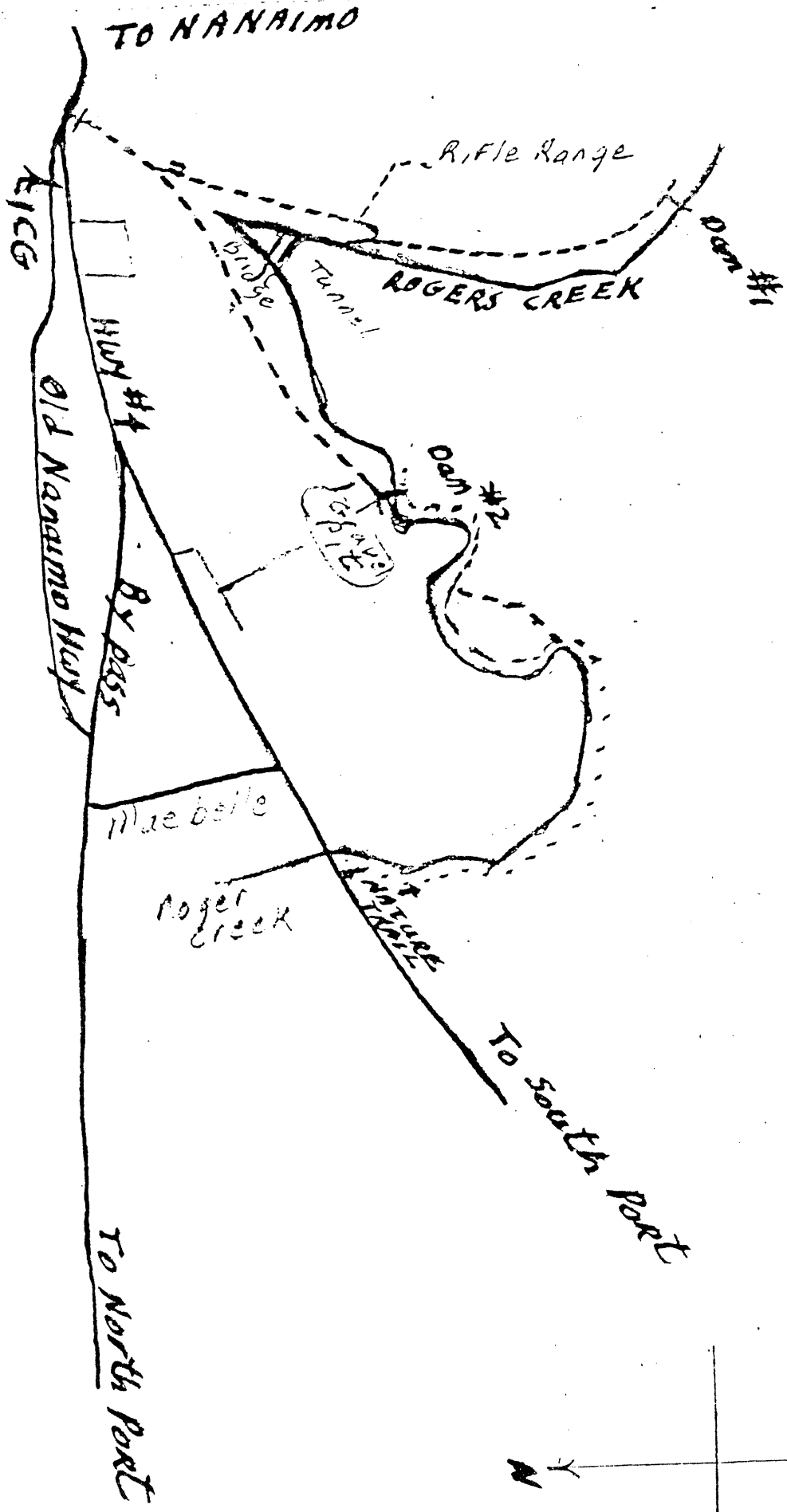
## ALTERNATIVE

A gentle riding trail leads from Highway #4, 200 meters east of the I.C.G. station, into Rogers Creek and branches. The right branch leads to the same water falls as above but on the opposite side of the creek. The left branch leads to an unusual "Hole in the Wall" and the first dam up Rogers Creek. The "hole in the wall" was cut through the cliff for the city's first water supply and the bridge for the pipe line can still be seen through the hole.

## LENGTH AND TIME

Both trails are about one km long and take 20 minutes to go one way.

NAME: ROGER CREEK NATURE  
DISTANCE/TIME:: km 3 ; 1.5 hr  
DIFFICULTY:: easy- fording  
CONDITION:: good  
ELEVATION:: 30 m change



ROGER CREEK PARK TRAIL

GENERAL DESCRIPTION:

This set of trails is in a open shady city park. The children's wading pool, the creek's soft murmur and the lofty trees make this an ideal place to relax. Being set in town and close to amenities makes it easy to find.

ACCESS:

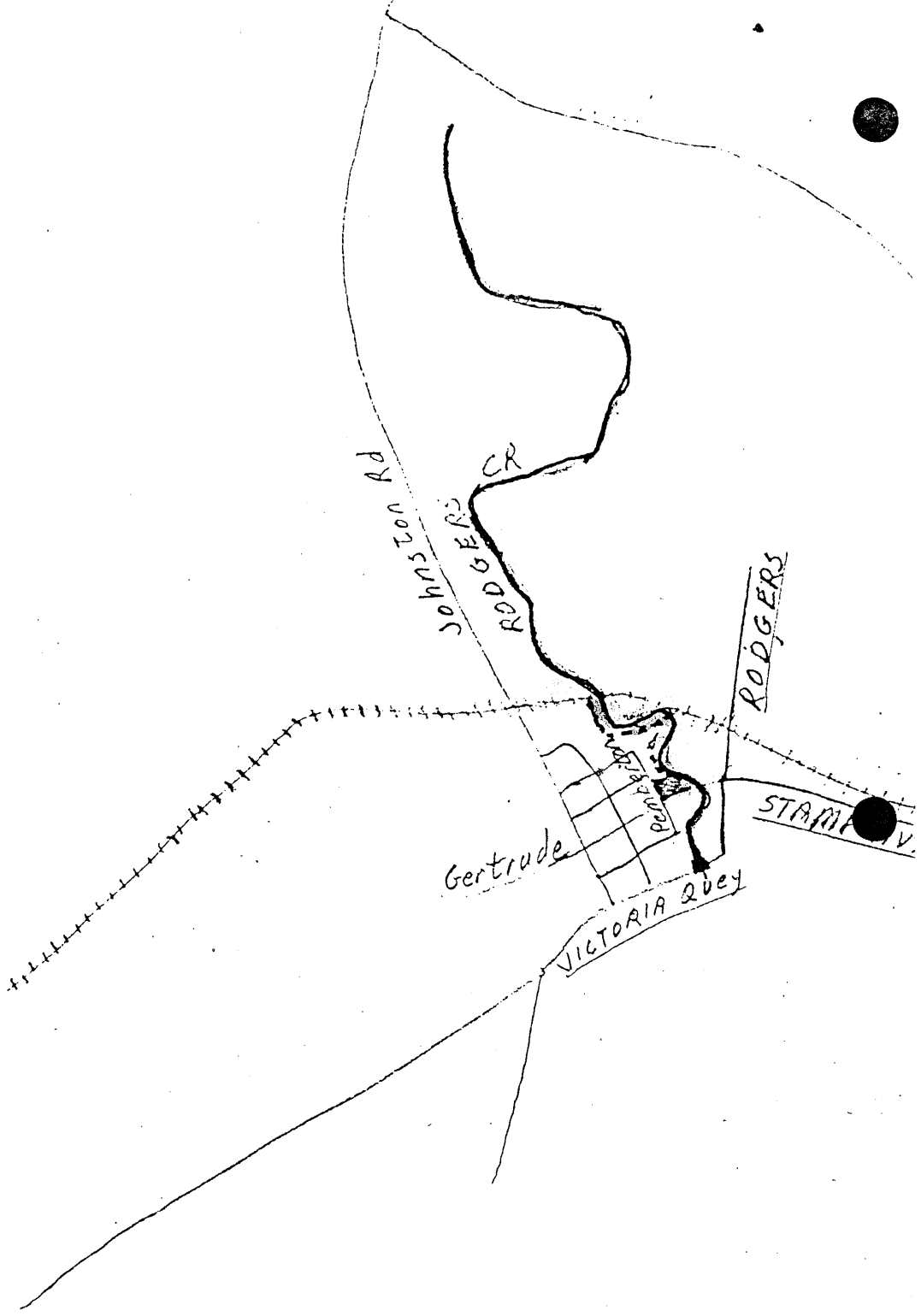
The park is at Gertrude and Pemberton Ave. just south of Gertrude and Johnston Rd.

LENGTH AND TIME:

The trails are less than 500 meters and take half an hour to walk around.

NAME: ROGER CREEK PARK  
DISTANCE/TIME:: km 1 /30 min  
DIFFICULTY:: easy  
CONDITION:: grassy  
ELEVATION:: no change

Rodgers Creek Park



ROGER CREEK CANYON TRAIL

GENERAL DESCRIPTION:

This series of trails will lead a hiker from Rogers Creek where it passes under Redford extension down to Ninth Ave in the creek bed. It is a pleasant afternoon hike through second growth forest, open fields, and gravel creek bottom.

ACCESS:

The trail can be entered at the end of Tenth Ave. down a path carved in the canyon bank, or behind the barns on the fairgrounds down a set of steps, or at the eastern end of the fairgrounds going up the old moto-cross trail, or at Wallace St and Twenty-First down the B.C. Hydro right of way or at the Rogers Creek where it passes under Redford Ave.

LENGTH AND TIME:

The trail is about 3 km and will take one hour to walk one way.

- NAME: ROGERS CREEK CANYON
- DISTANCE/TIME:: km 1;30 min
- DIFFICULTY:: moderate
- CONDITION:: wooded trail, rocky
- ELEVATION:: 50m change

Johnston

Red Ford



BC HYDR

21 STAVE

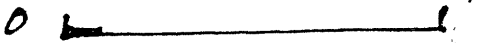
Fair Grounds  
VIMY

Hollyhock

10 CA

WALLACE

Rodgers



40

## SPROAT LAKE PARK

### GENERAL DESCRIPTION:

This Provincial park is 14 km west of Port Alberni has sandy beaches and a boat launching ramp for swimmers and boaters. There is a trail along the Sproat Lake shore from the boat launching ramp to the petroglyphs and dock at the eastern end of the park. The Indian name for Sproat Lake is Kleeccoot which means "wide open".

### ACCESS:

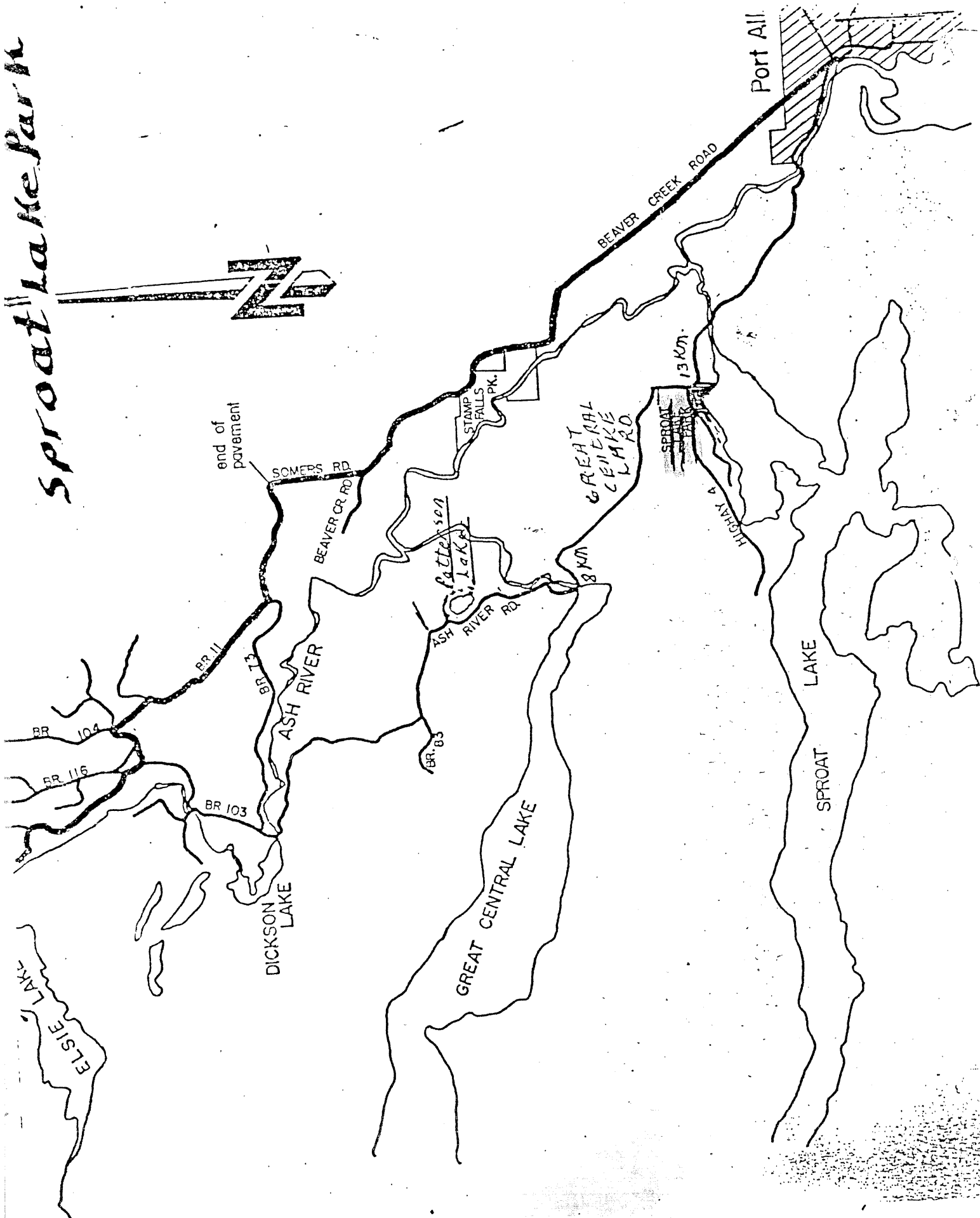
Drive west out of Port Alberni on the # 4 Highway for 14 km. There you will find a large provincial park sign on your left. Follow the winding road for 1/2 a km. into the parking lot.

### LENGTH AND TIME:

The water front trail is 1.25 km one way and can be walked in under an hour.

NAME: SPROAT LAKE PROV. PARK  
DISTANCE/TIME:: km 1.2 ; 1 hour  
DIFFICULTY:: easy  
CONDITION:: gravel trail  
ELEVATION:: 20 m change

# Sproat Lake Park



STAMP FALLS PROVINCIAL PARK AND TRAILS

GENERAL DESCRIPTION:

Stamp Falls Provincial Park contains one of the most scenic areas in the Alberni Valley as well as an excellent trails system, campgrounds, and picnic tables. Although this is a locally well known area it is not frequented as often as one might think with the many attractions the park has to offer. The trails running through the park will lead you to several outdoor experiences depending upon the time of year you visit the area. In late autumn spawning salmon can be viewed both in the fish ladders on the upper river and attempting to leap the waterfalls. The Stamp Falls are beautiful at any time of the year and it is worthwhile to go to the park just to see the them. There is a large pool below the river canyon that offers excellent fishing for trout and steelhead.

ACCESS:

Follow 10th Avenue north to Roger Street. Turn left here and drive until it turns to the right and becomes Victoria Quay. Continue on this street to the intersection of Beaver Creek Road and turn on to it (watch for sign reading Stamp Falls Park) Drive out Beaver Creek Road for approximately 12km until you come to the park entrance. to find your way to the various parts of the park see the accompanying map or the excellent map in the park.

LENGTH AND TIME:

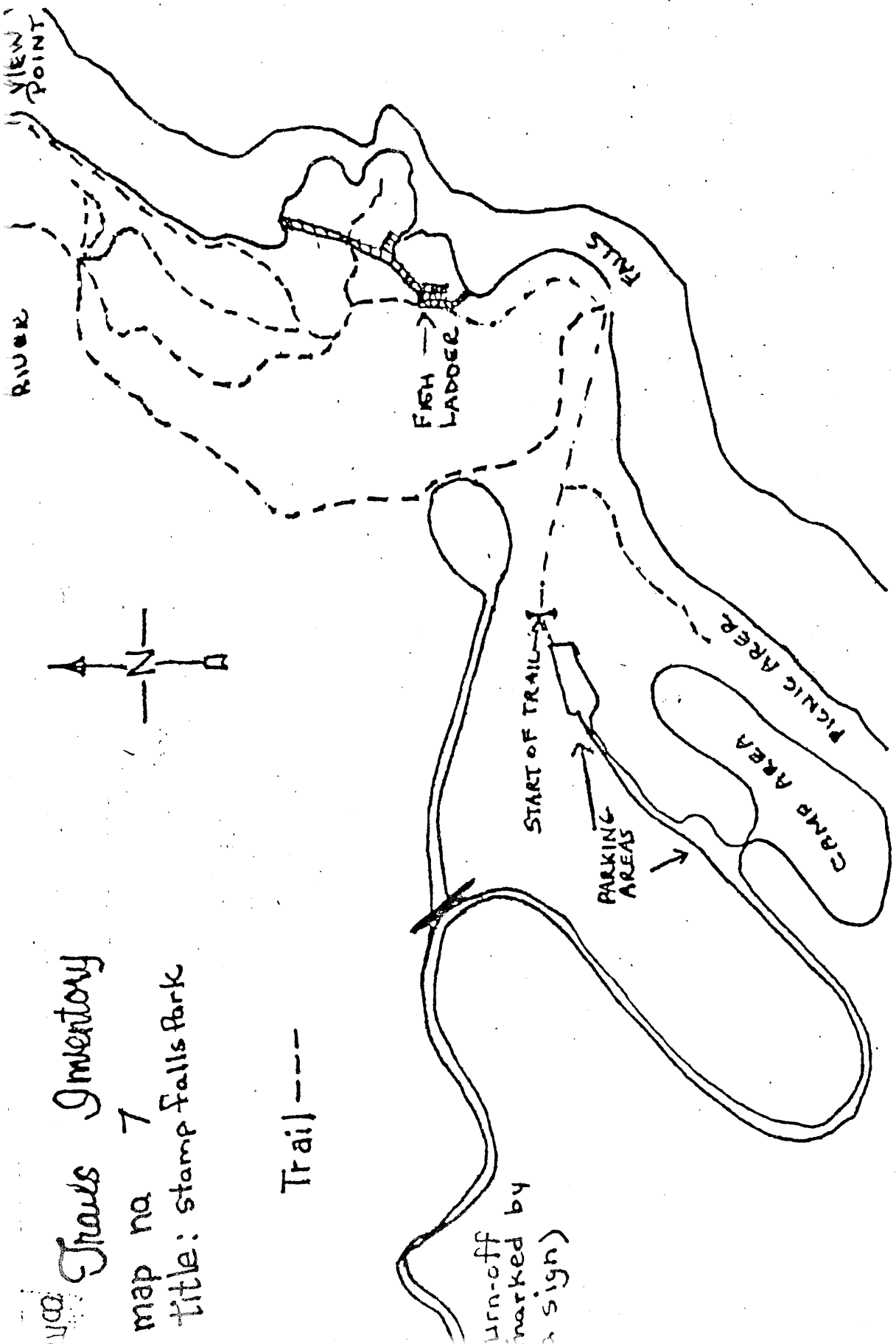
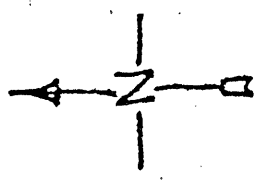
Stamp Falls Park is about 14km out of Port Alberni. From the Park entrance to the campgrounds is about 2km. The length and time for the individual trails would depend upon which route one walked. The longest possible walk being about 2 km or about 40 minutes one way.

NAME: STAMP FALLS PROV PK  
DISTANCE/TIME:: various  
DIFFICULTY:: easy  
CONDITION:: good- muddy  
ELEVATION:: 30 m change

Thru's Inventory  
map no 7  
title: stamp falls park

Trail ---

Turn-off  
marked by  
(a sign)



### SUMMIT LAKE TRAIL

#### GENERAL DESCRIPTION:

This trail will lead one from the Alberni Summit of Highway 4 (locally called the Hump) to the Summit Lake (locally known as "Dog" lake) The path is an easy, level walk through second growth timber until near the end where it goes down fairly steeply to the C.N.R. tracks on the edge of the lake. Summit Lake is a small 'pond' Lake which often freezes over in the winter and is used as an outdoor ice skating rink.

#### ACCESS:

Drive east on Redford St., and out Highway #4 Approximately 10 Km, where on the right hand side you will see a sign reading Alberni Summit and then a large parking area. Directly across the highway from the parking area you will find the start of the trail.

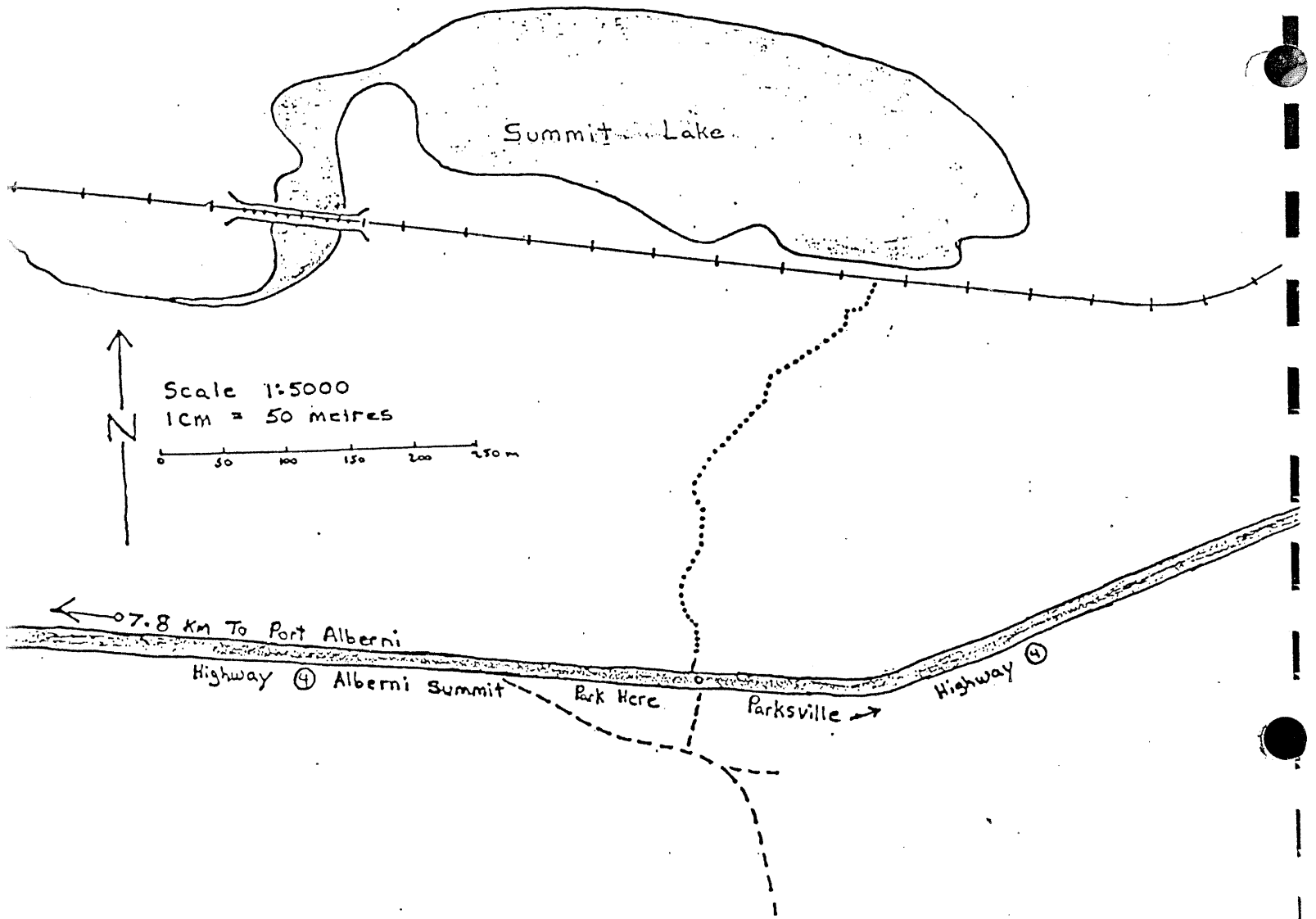
#### LENGTH AND TIME:

This trail is less than 800 meters (1/2 mile) long one way and it would take about 15 minutes to walk from the highway to the lake.

NAME: SUMMIT LAKE  
DISTANCE/TIME:: km .5/20 min  
DIFFICULTY:: easy - embankment  
CONDITION:: good  
ELEVATION:: 30 m change

# Summit Lake Trail

2.



43

## TRESTLE TRAIL AND LOOKOUT ROAD

### GENERAL DESCRIPTION:

For anyone wishing a panoramic view of the Alberni Valley, two of the better vantage points are located closely enough to each other to be done on an afternoons outing.

The first of these can be reached by following the Trestle Trail which is a gentle climb along a well defined path. On your way up, the trail will lead you through some beautiful Alder groves, with abundant fern growth. When you reach the top a short walk along the road to the tracks for approximately 300 yards will bring you to the wooden railway trestle where you can rest and enjoy a beautiful view.

The second and most spectacular viewpoint is from the old fire lookout site. The road to the lookout maybe done for the majority of the way either by car or bike. From the point where you must park your car or bike to the viewpoint at the top is about 10 minute walk. For the hardier hiker another route to the lookout would be to climb up from the railway tracks near the trestle. Although there is no trail you should be able to pick your way up through the bush.

### ACCESS:

Follow highway 4 about 5 km east to the ICG gas station. Once there take the left hand road marked Export Rd. The road going up the hill is the Lookout Road. Following it for approximately 3 km will bring you to a fork in the road. Follow the left hand road as far as possible to the Lookout viewpoint.

### LENGTH AND TIME:

The Trestle trail is roughly 1.6 km long and would take 30 minutes to walk from the trail start to the trestle. The road to the Lookout would take about 30 minutes to walk from start to finish, about 10 minutes by car and a 10 minute walk.

N.B. See Map

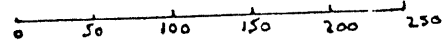
- a) Trestle Trail 1 mile
- b) Left Fork of Lookout Road 400 meters

NAME: TRESTLE & LOOKOUT TR  
DISTANCE/TIME:: km 2 /45 min loop  
DIFFICULTY:: easy  
CONDITION:: rocky  
ELEVATION:: 305 m

Trestle



Scale 1:5000  
1cm. = 50 metres



1.6 Km to Lookout

Lacy Lake Road

Export Road

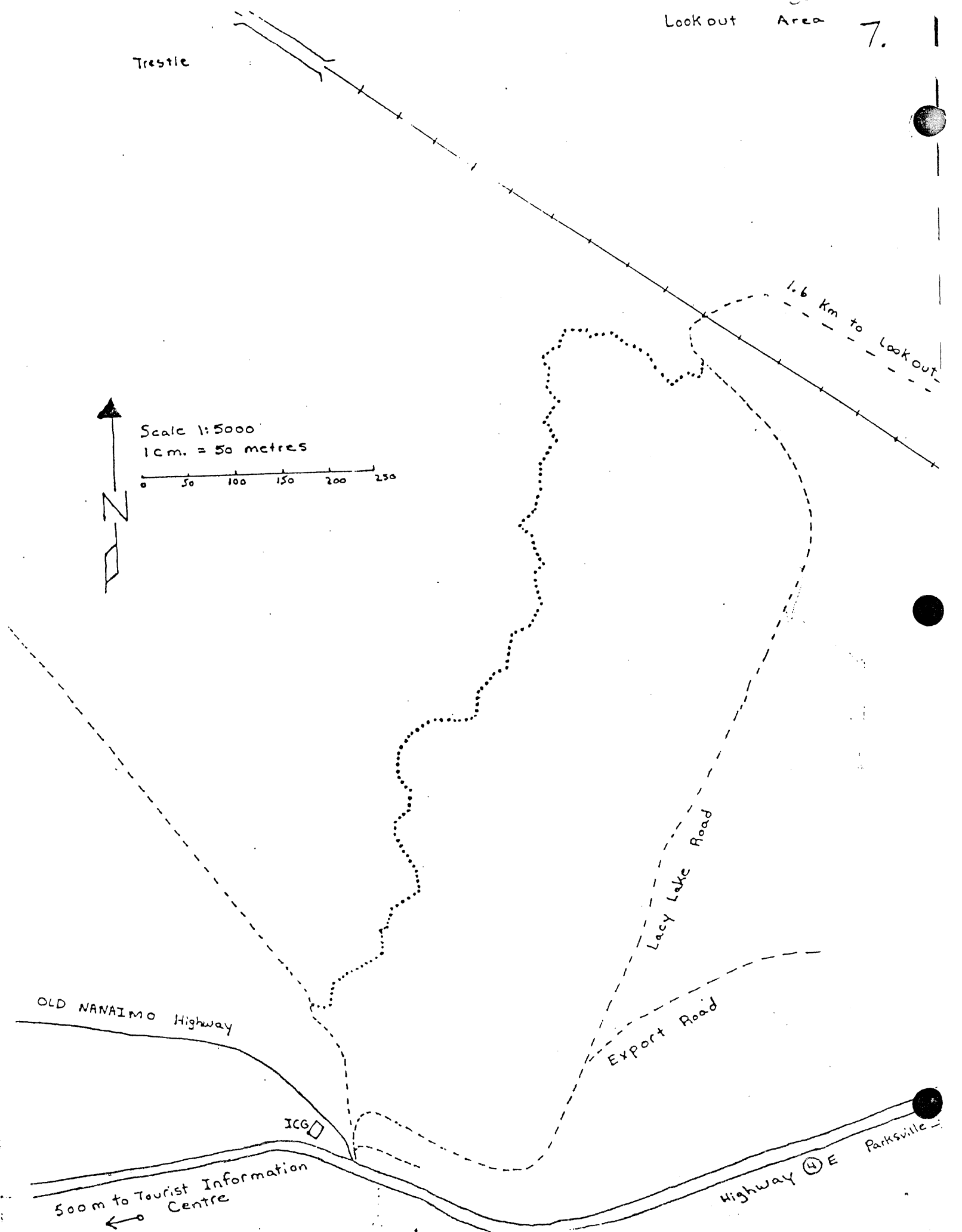
OLD NANAIMO Highway

ICG

500m to Tourist Information Centre  
←

Highway ④ E

Parksville



TURTLE LAKE TRAIL

GENERAL DESCRIPTION:

This small lake just east of Great Central Lake road was the home of turtles in bygone years. There is an extensive swamp surrounding its edges and may be impassable in wet weather.

ACCESS:

Drive west out of Port Alberni on Highway #4 for 13 km. then turn right onto Great Central Lake Road (1 km east of Sproat Lake Park). Follow G.C.L. Road for 5 km and just before the B.C. Hyrdo 3 phase transmission lines cross the road there is a logging road that crosses at right angles. Turn right onto the logging road and follow it past the substation. Either follow the logging road further and take the left branch up east of Turtle Lake or walk behind the substation and follow the old road into Turtle Lake.

LENGTH AND TIME:

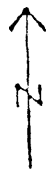
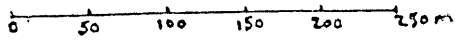
The trail is about 1 km one way and can be walked in under an hour.

- NAME: TURTLE LAKE TRAIL
- DISTANCE/TIME:: km 1; 1 hr
- DIFFICULTY:: easy
- CONDITION:: swampy, rocky, woods
- ELEVATION:: 10 m change

# Turtle Lake Trail

Scale 1:5000

1 cm = 50 metres



Park Here

2 Km

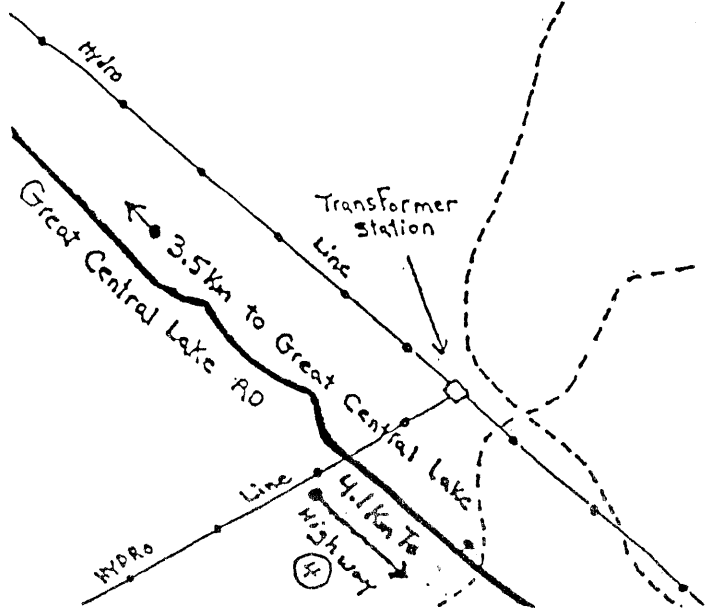
SWAMP

Turtle Lake

1.5 km

1.9 km

PDND



WARD LAKE TRAIL

GENERAL DESCRIPTION:

Ward Lake, named for pioneer Mat Ward, is a small, secluded lake located approximately 11 km out of Port Alberni and not far from Sproat Lake Provincial Park. The trail to the lake is well defined and takes a meandering route along small creeks. During wet weather, runoff water may be flowing along several sections of the path and caution is advised when crossing the log jam bridging Ward Creek. The trail comes to an end in a small clearing on the edge of the tranquil, unspoiled lake.

ACCESS:

Follow Highway 4 out of Port Alberni towards Sproat Lake. Just past Great Central Lake Road a logging road crosses the Highway. Turn right on this road and then turn on the first road you come to on the left hand side. Follow this road for approximately 1.6 km watching the right hand side of the road for the trail start marked by spray paint on trees.

Alternately it is best to park across from the West Bay Hotel and walk back to logging road about 800 meters.

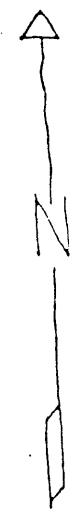
LENGTH AND TIME:

The trail is approximately 3.6 km from the start to the lake and could be walked one way in one hour.

- NAME: WARD LAKE
- DISTANCE/TIME:: km 3.6 / 2 hr loop
- DIFFICULTY:: easy
- CONDITION:: good road bed
- ELEVATION:: 175 m rise

Ward run

Hydro Line



11

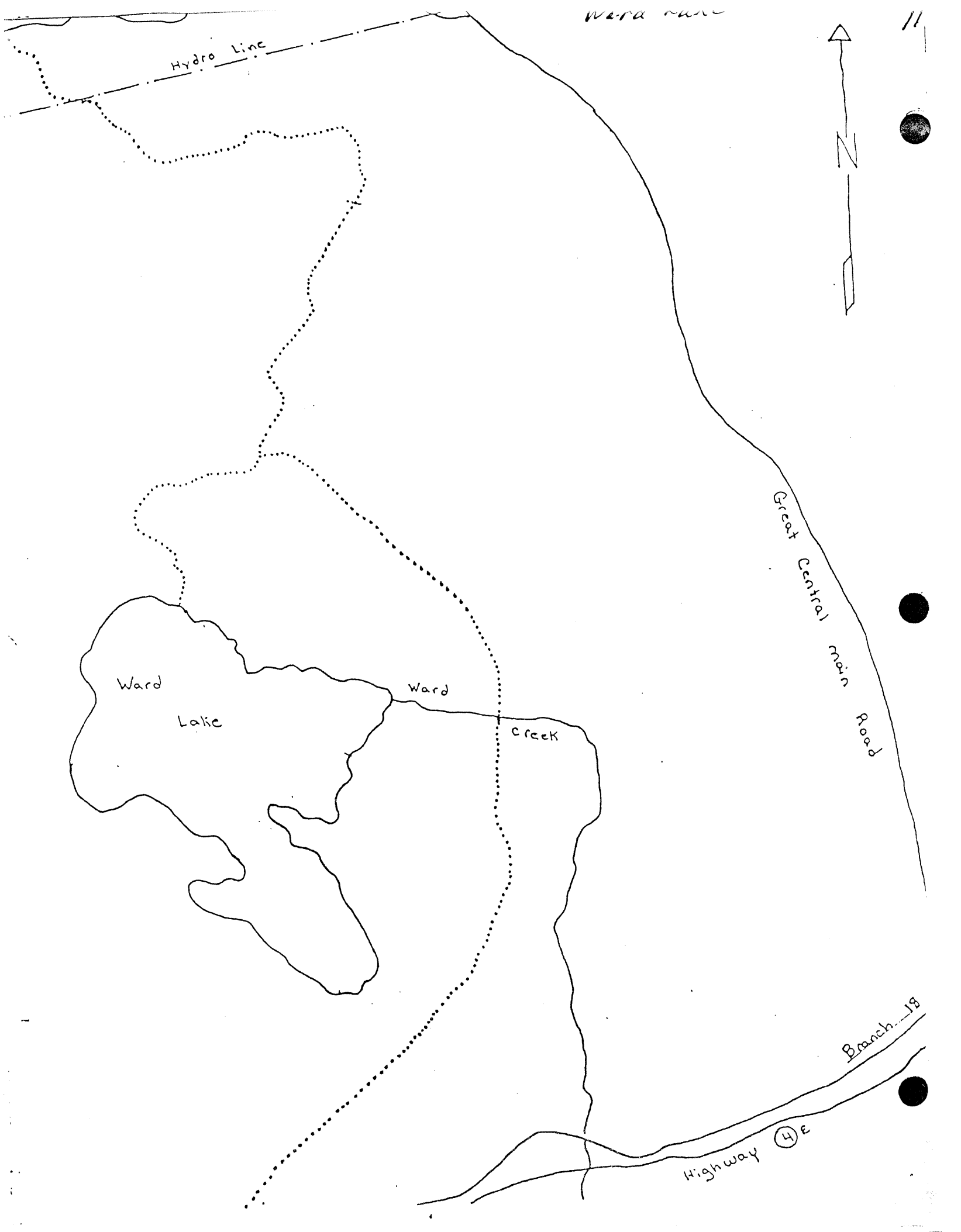
Erret Central main Road

Ward  
Lake

Ward  
creek

Branch 18

Highway (4) E



4/16

## WESLEY RIDGE TRAIL

### GENERAL DESCRIPTION:

This hike will take you along an old logging road from its start at Little Qualicum Falls Provincial Parks, up to its end at a microwave tower on Wesley Ridge. (a spur of Mt. Wesley) The old road takes a wandering route through alternating second growth timber and old logging slash areas and is moderate uphill clime for most of the way. From the rock bluff on which the microwave tower is located, there is an excellent view of the east coast of Vancouver Island including Demman and Hornby Islands, the Strait of Georgia and on clear days part of the mainland.

### LENGTH AND TIME:

The one way trail distance is just over 8 km, and it would take the average person about 2 1/2 hours to walk each way.

### ACCESS:

Follow Highway 4 east out of Port Alberni approximately 30 km to Little Qualicum Falls Park. Turn into park entrance (marked by a sign) and to day parking area.

### MAP GUIDE:

1. Parking areas and trail start. After leaving your car in on of the park parking areas, take the trail to the upper falls.
2. Cross the bridge over the river and take the middle trail. A short distance along this trail you will come to a clearing with a logging road though it.
3. Turn left here and follow the logging road.
4. At this point take the right hand road (do not follow sign posted on left hand road).
5. Take the right hand road.
6. Take the left hand (upper) road.
7. Microwave tower and trail end.

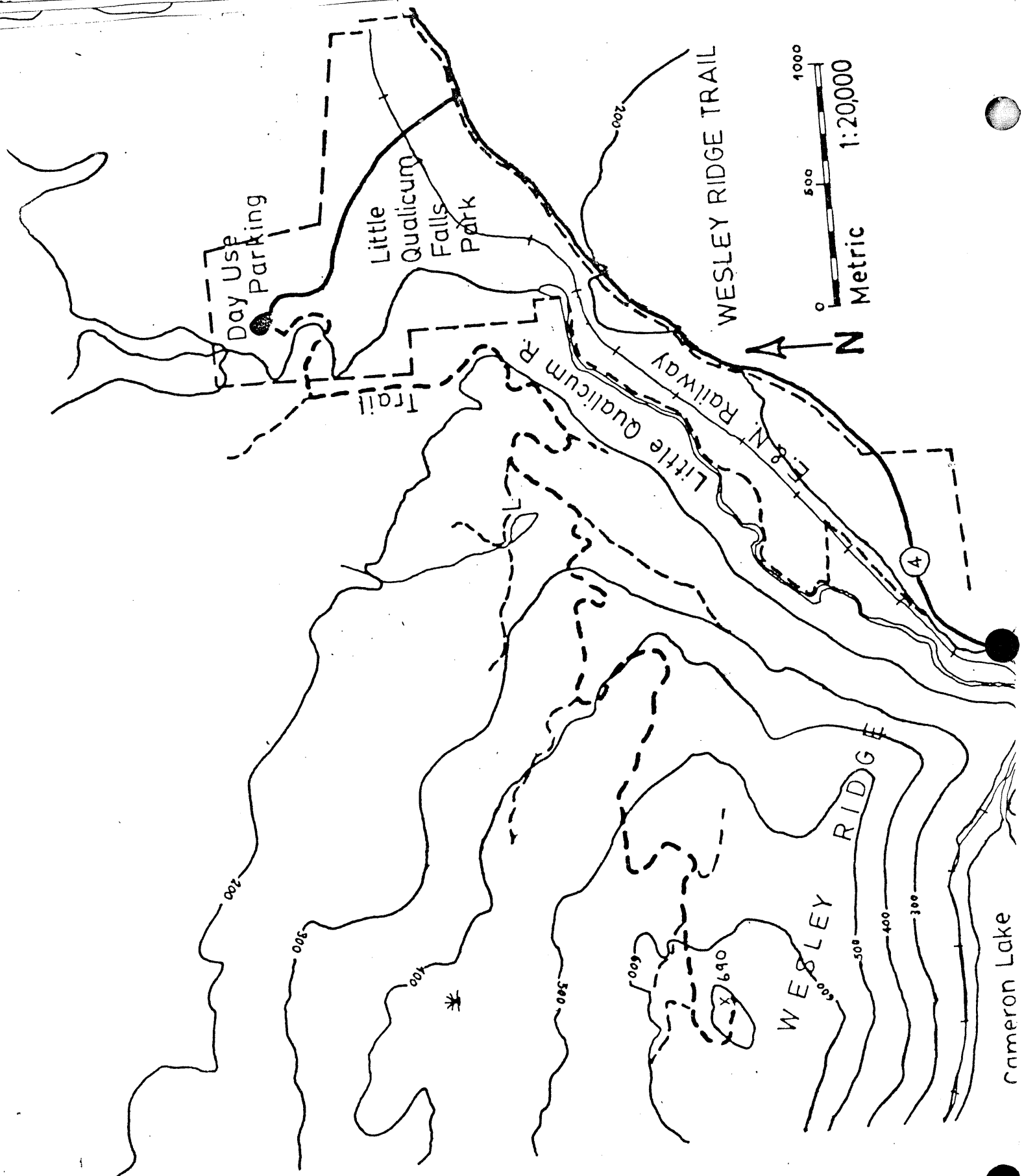
NAME: WESLEY RIDGE

DISTANCE/TIME:: km 8 /3 hrs

DIFFICULTY:: moderate

CONDITION:: good, 4 X 4 road

ELEVATION:: 500 m rise



Day Use  
Parking

Little  
Qualicum  
Falls  
Park

Trail

Little Qualicum R.

WESLEY RIDGE TRAIL

N

1000  
500  
Metric  
1:20,000

A

WESLEY RIDGE

Cameron Lake